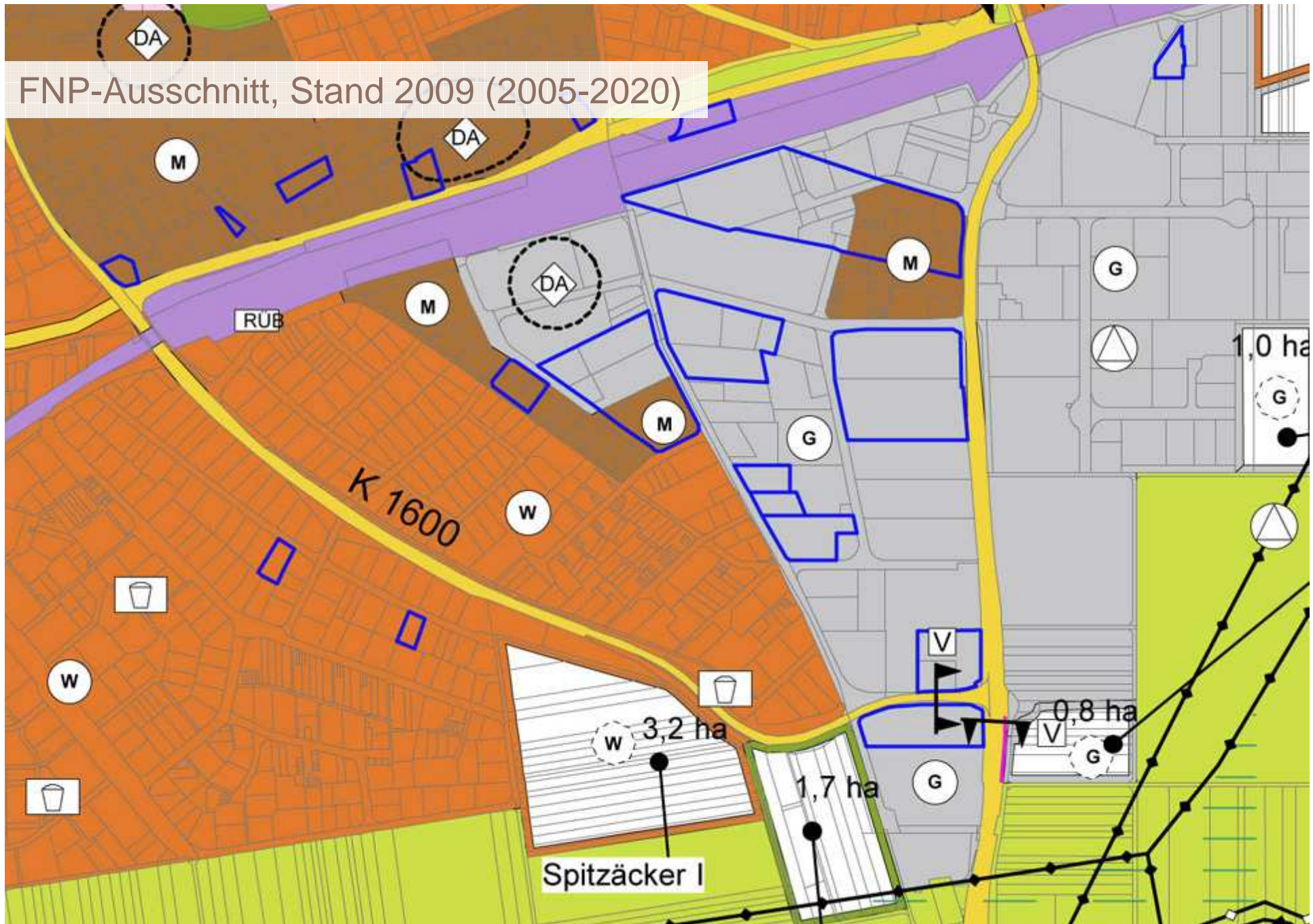


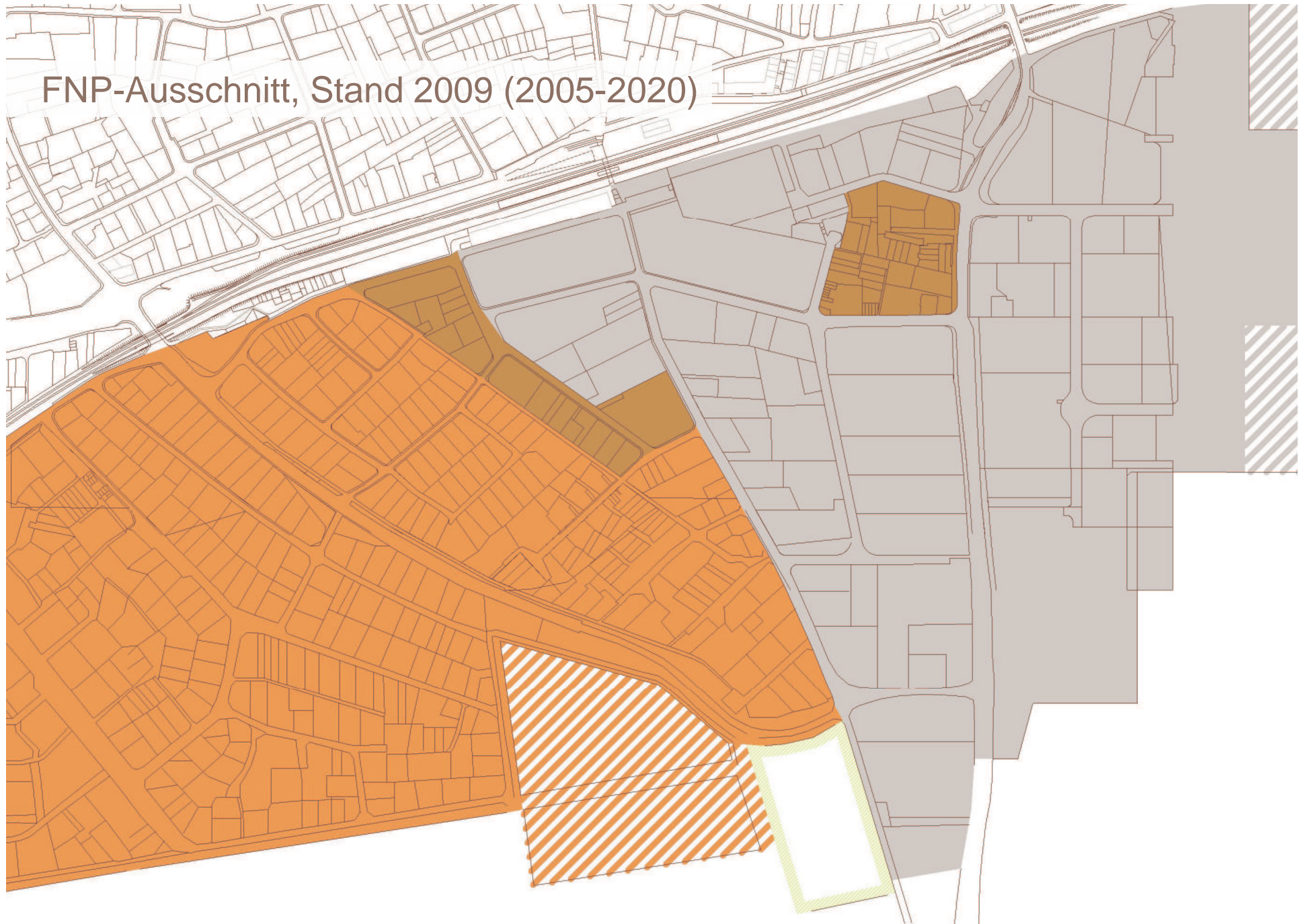
3. Vertiefung in Bezug auf Bürgerversammlung vom 16.11.2009

- Status quo und Leitbild, Bahnhofsgelände Süd
- Hanghäuser Nothhaftstraße
- Verkehrsaspekte

FNP-Ausschnitt, Stand 2009 (2005-2020)

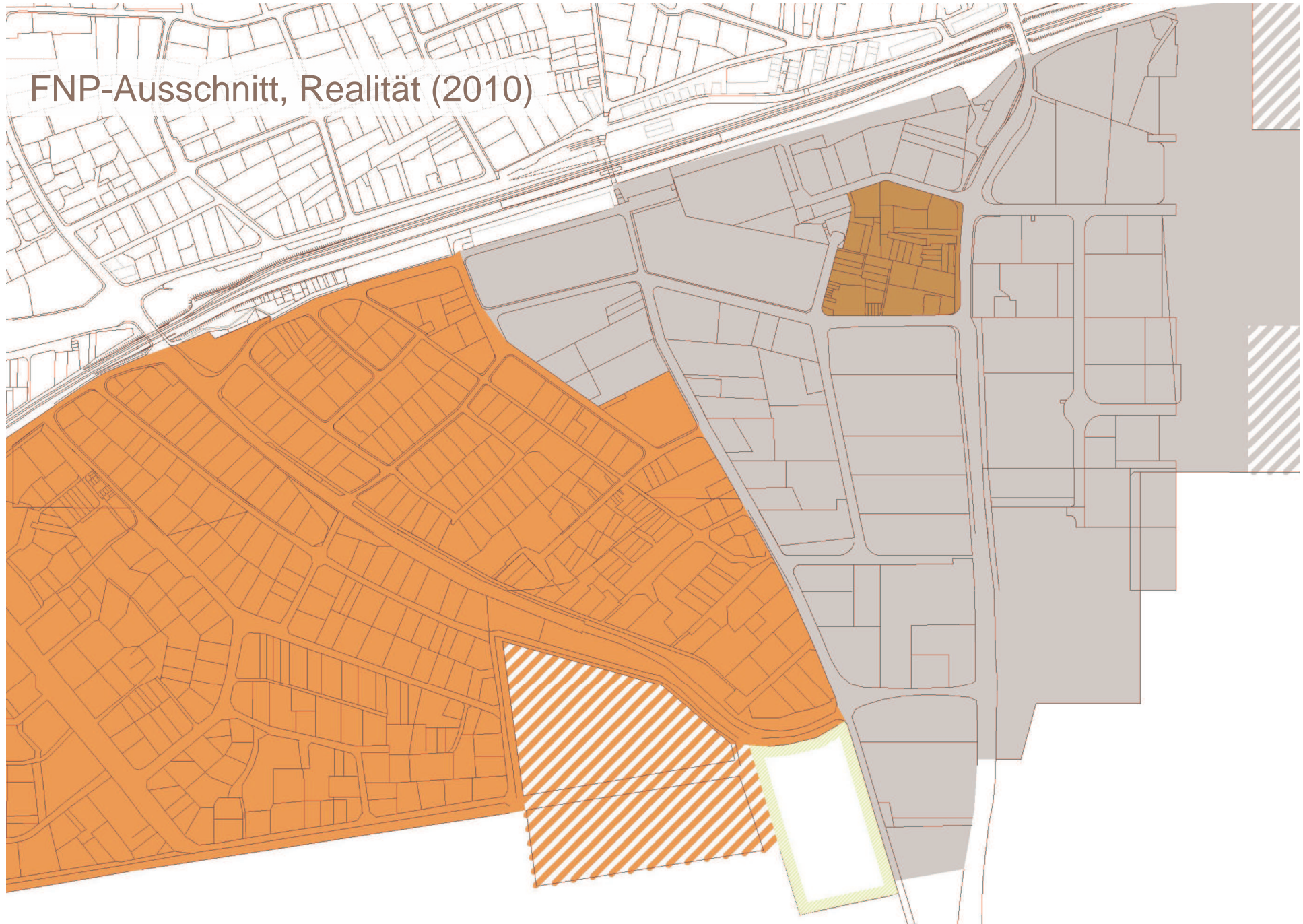


FNP-Ausschnitt, Stand 2009 (2005-2020)

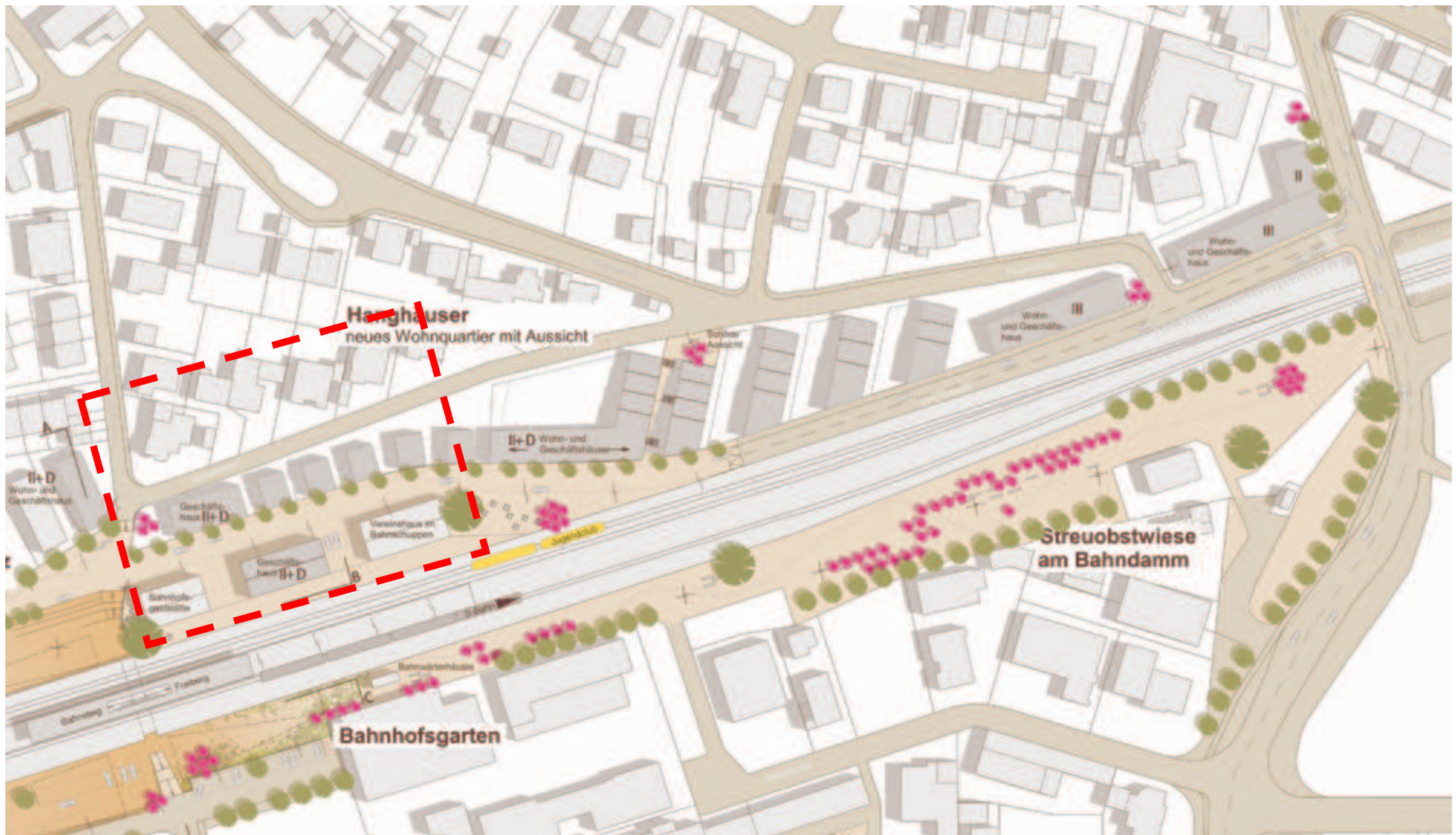




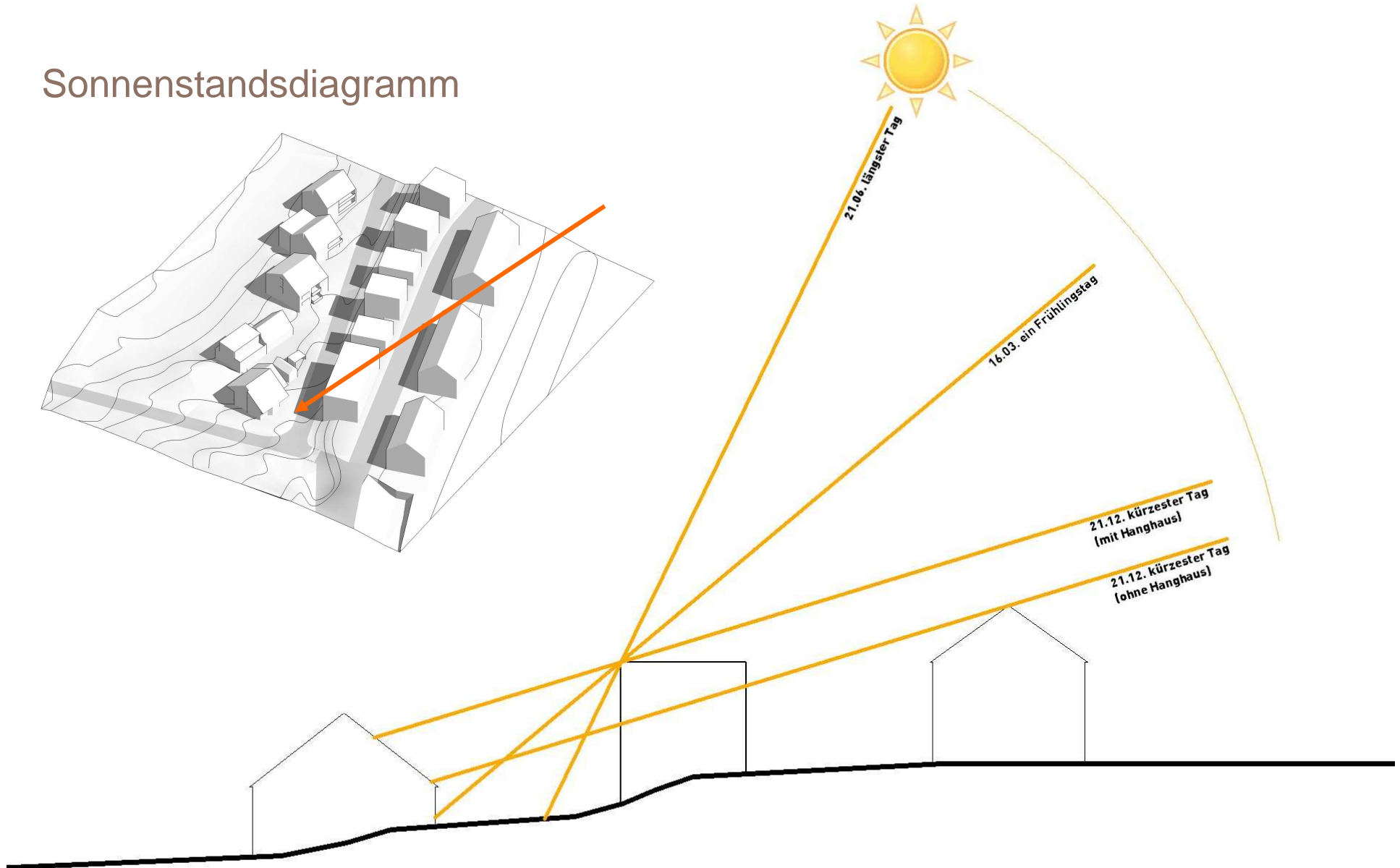
FNP-Ausschnitt, Realität (2010)



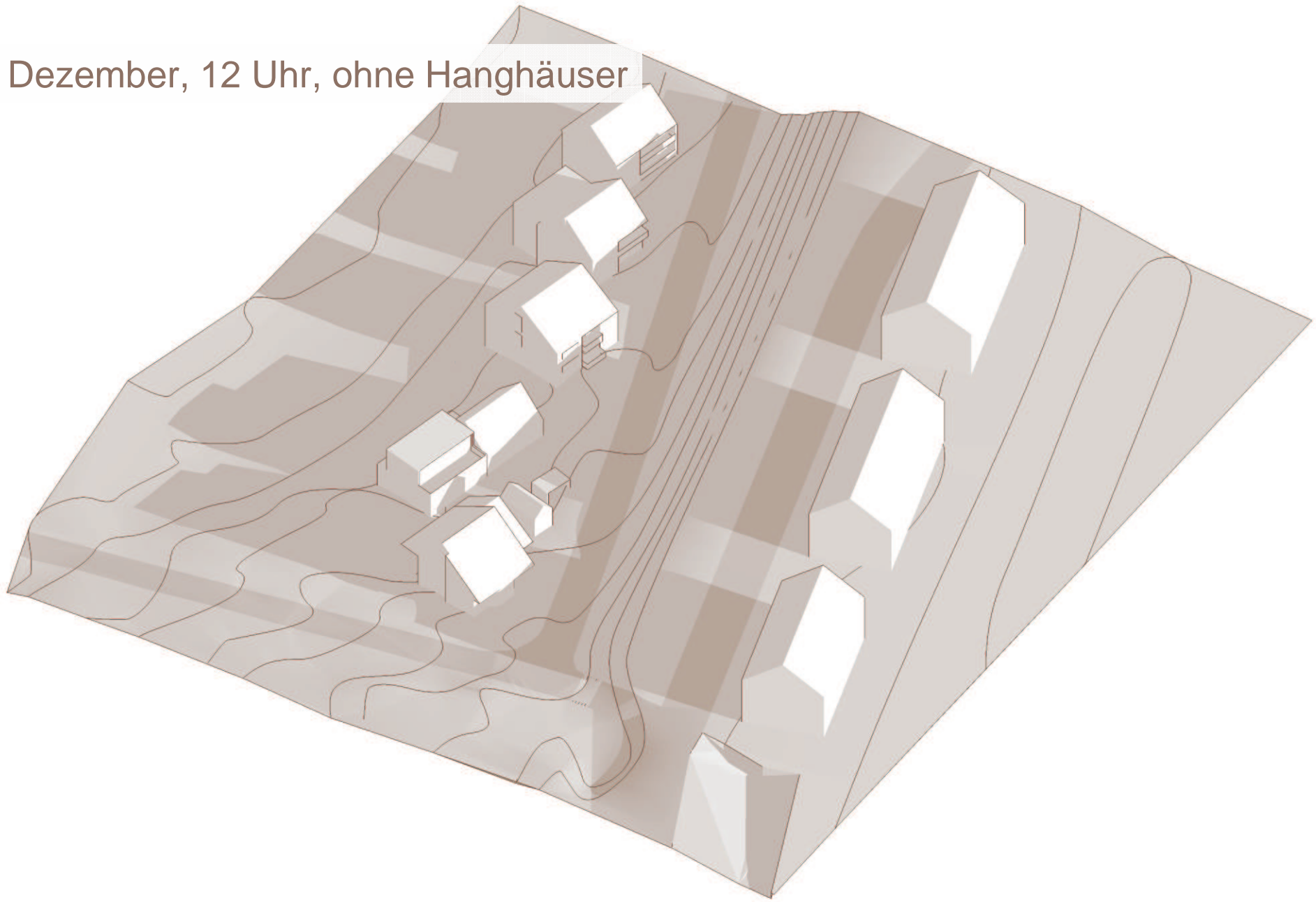
Hanghäuser



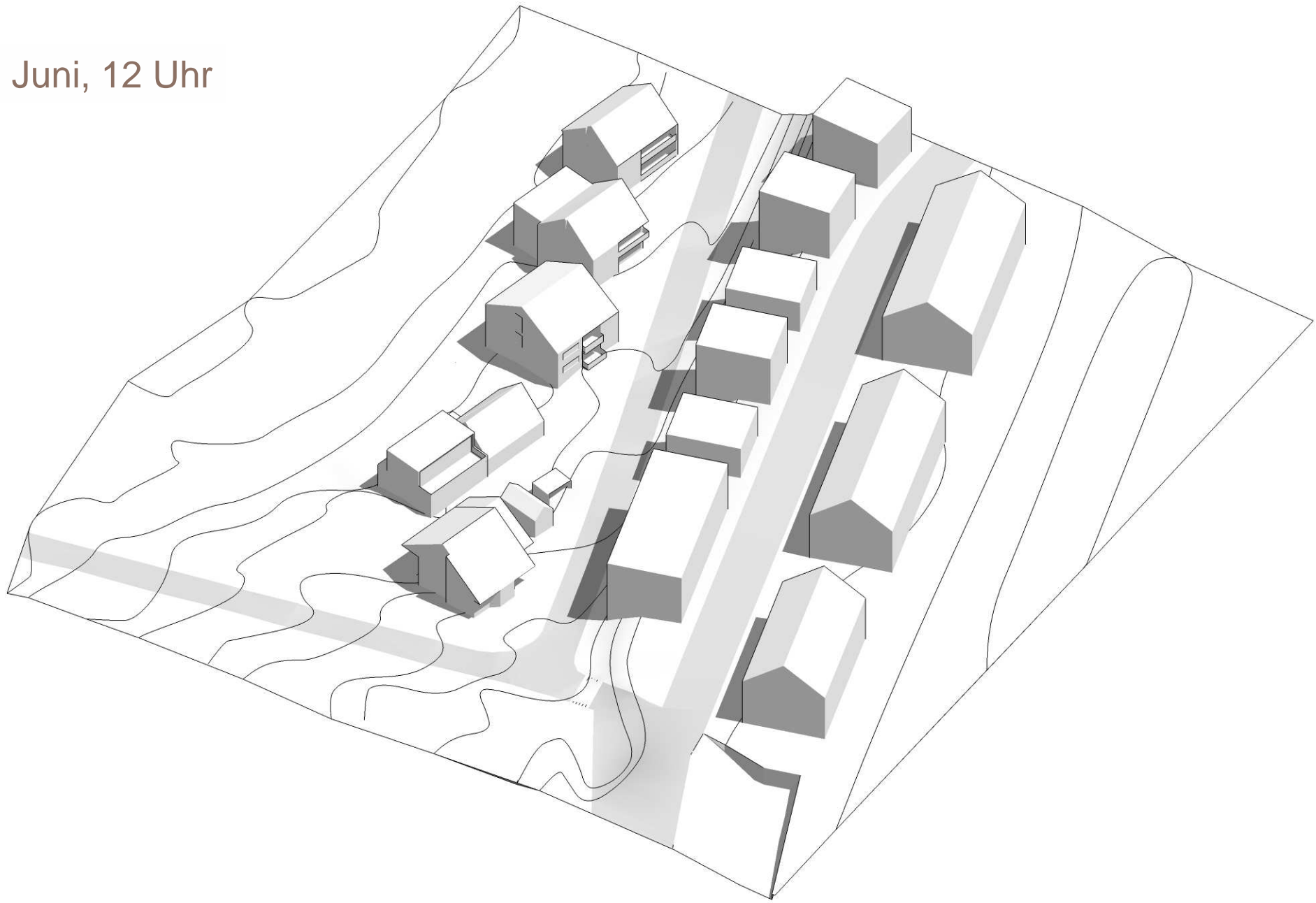
Sonnenstandsdiagramm



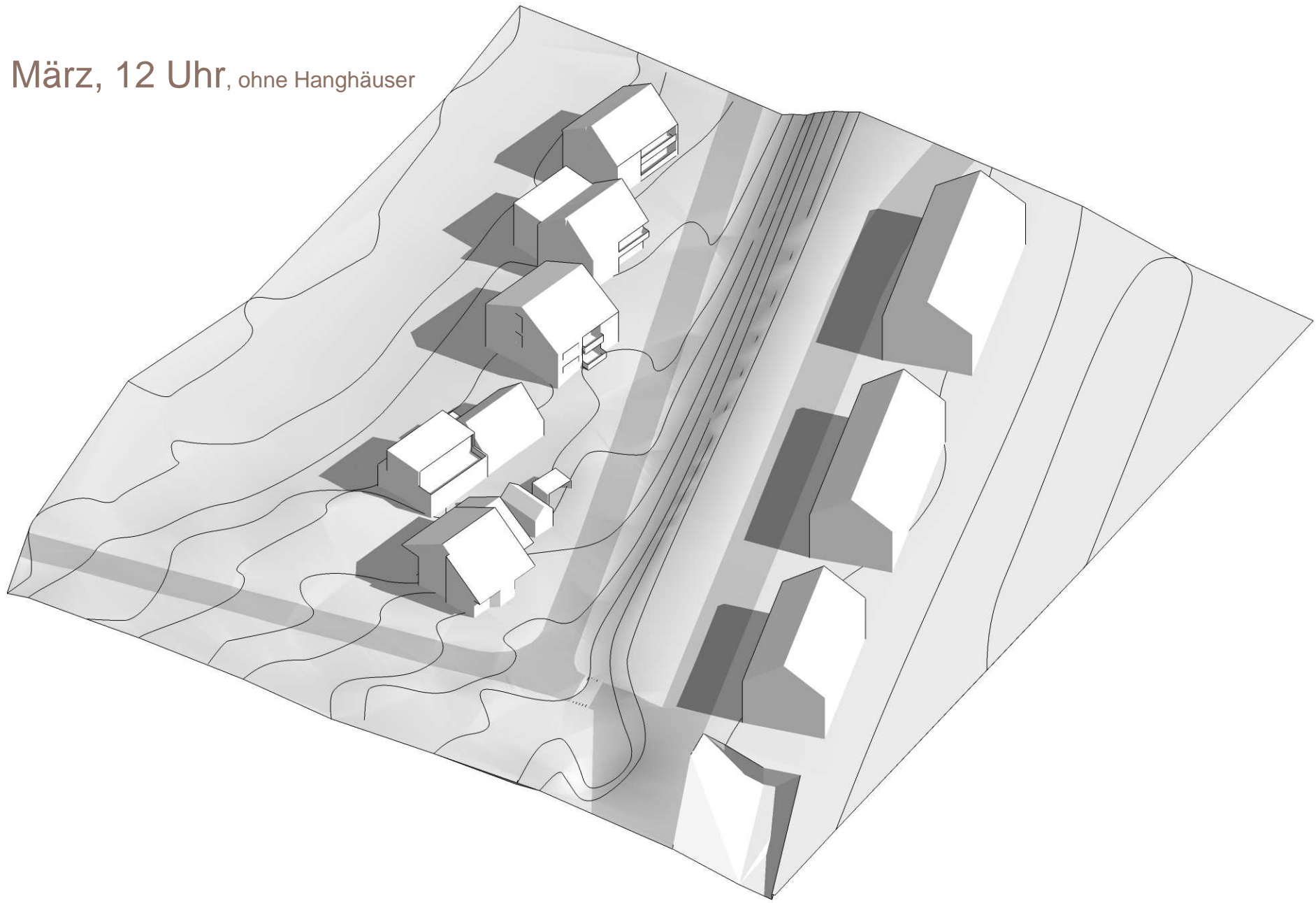
Dezember, 12 Uhr, ohne Hanghäuser



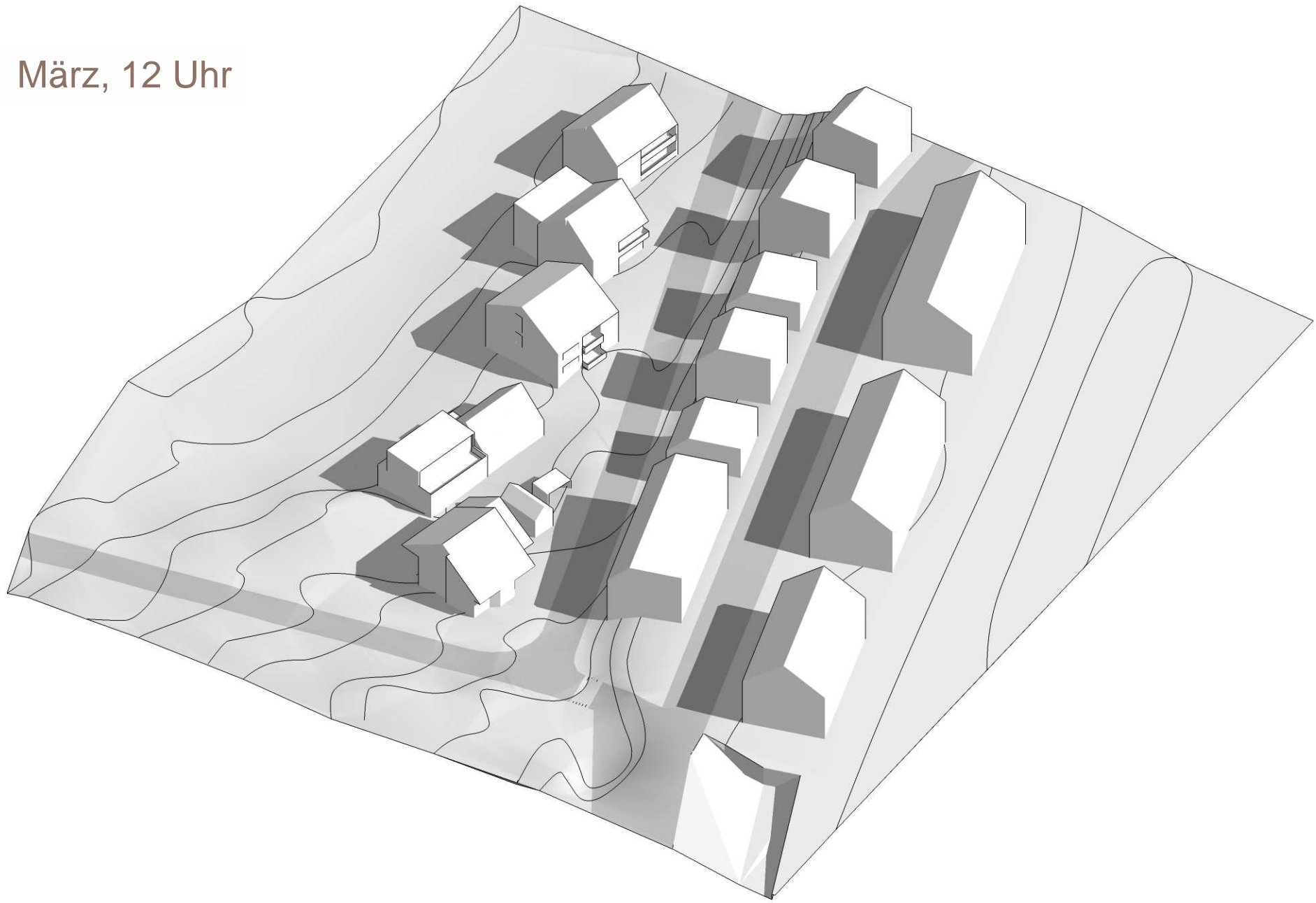
Juni, 12 Uhr



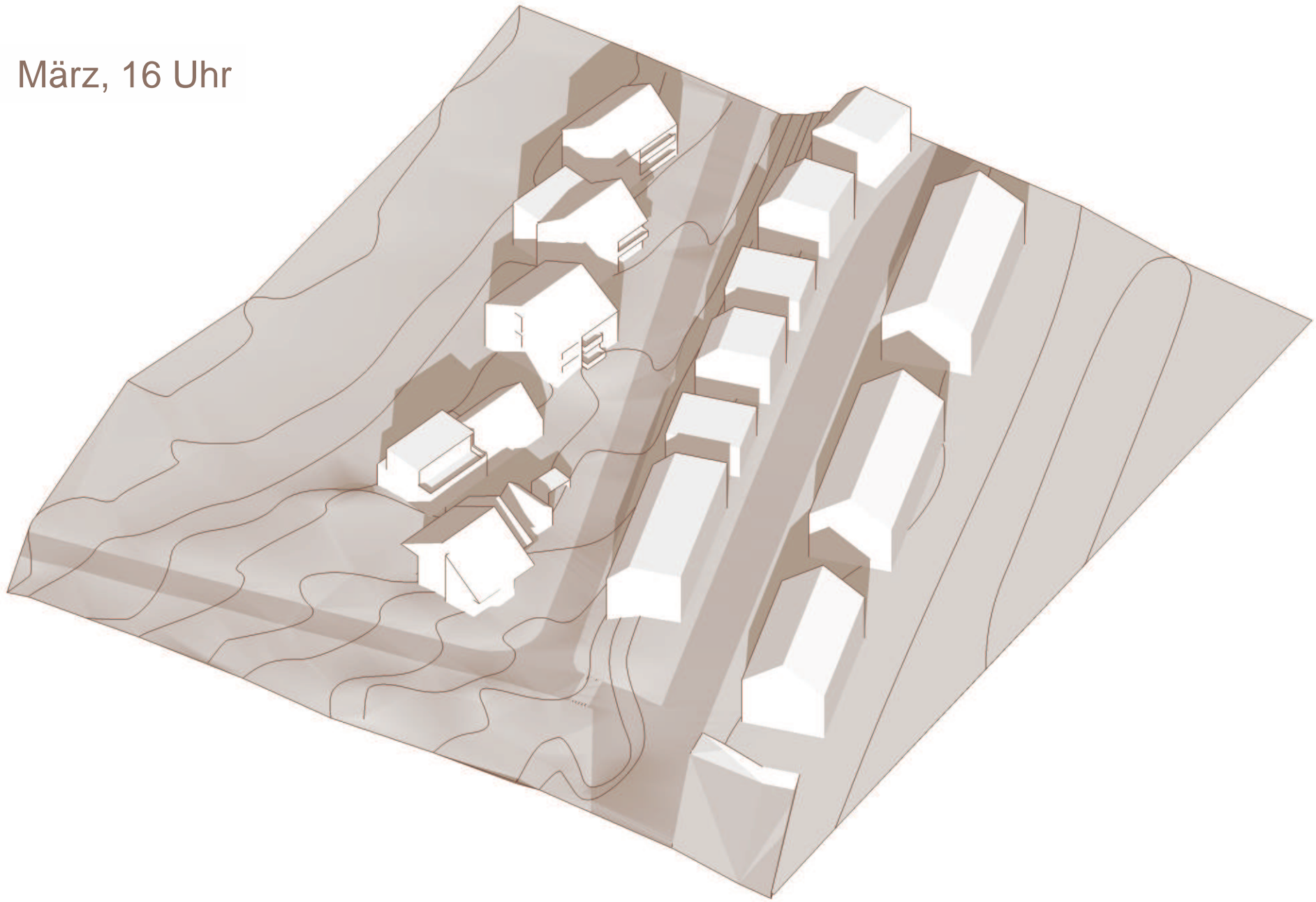
März, 12 Uhr, ohne Hanghäuser



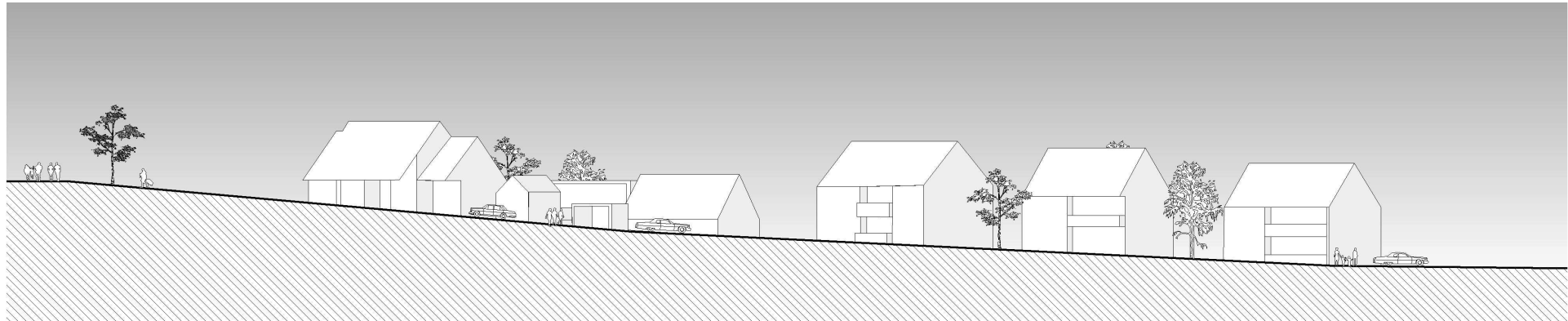
März, 12 Uhr



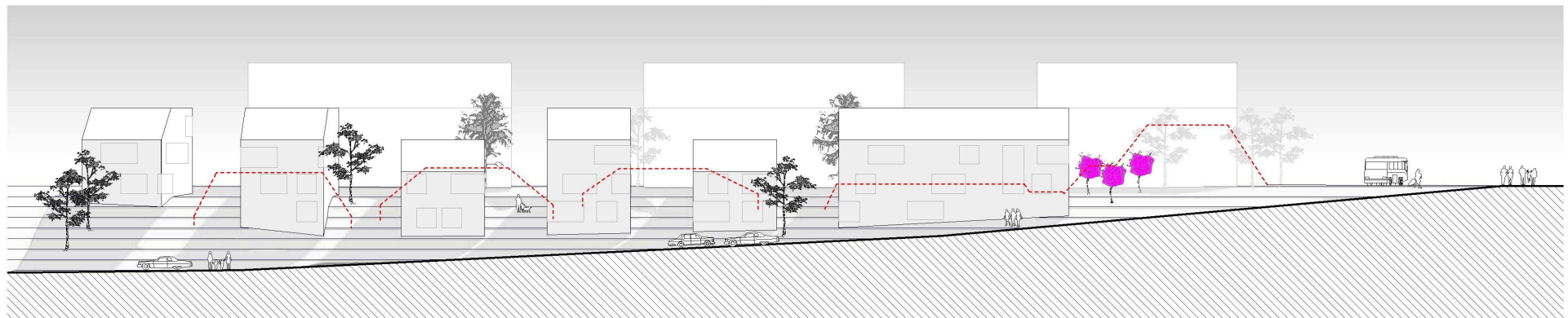
März, 16 Uhr



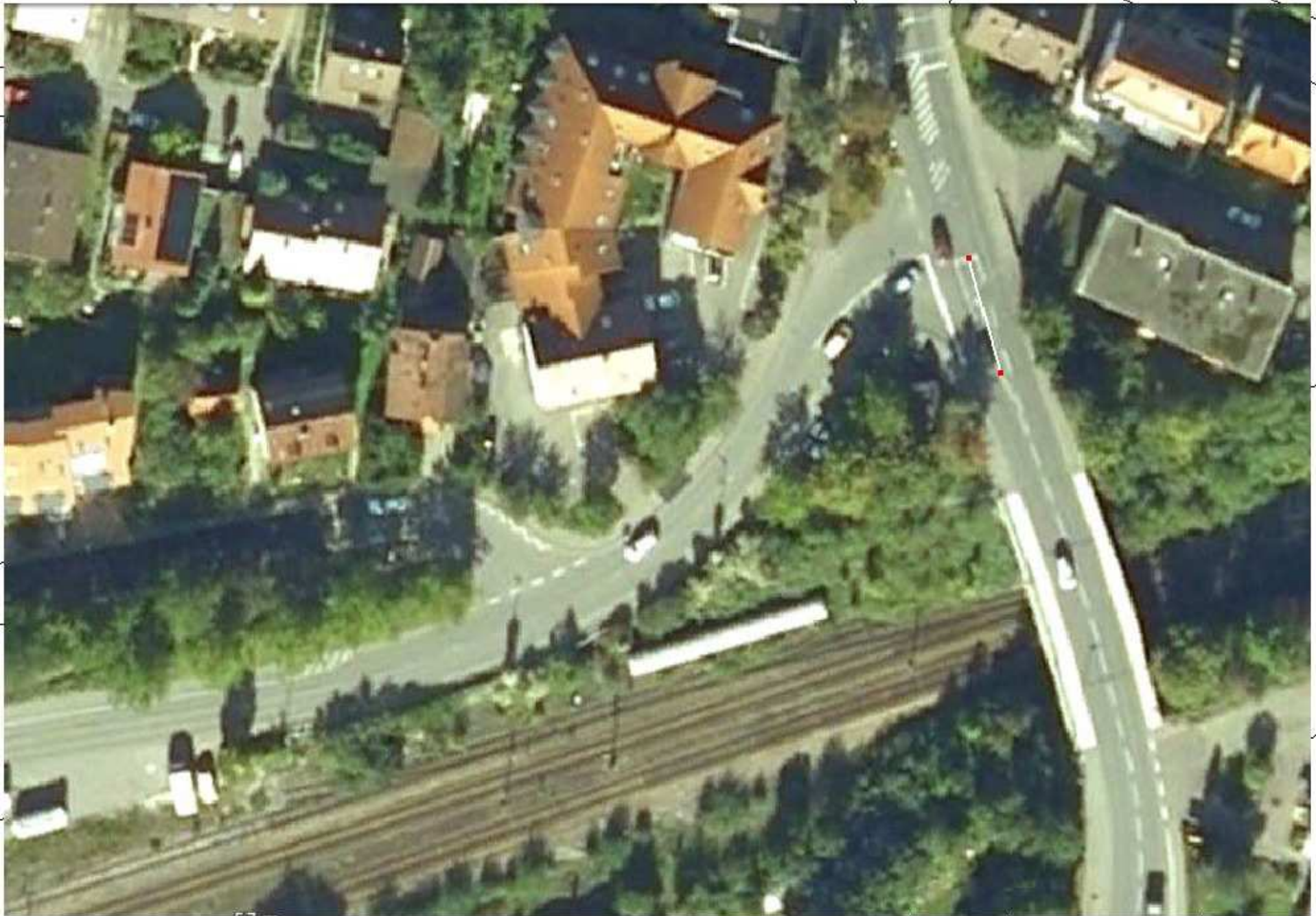
Ansicht Nothaftstraße, Richtung Nord

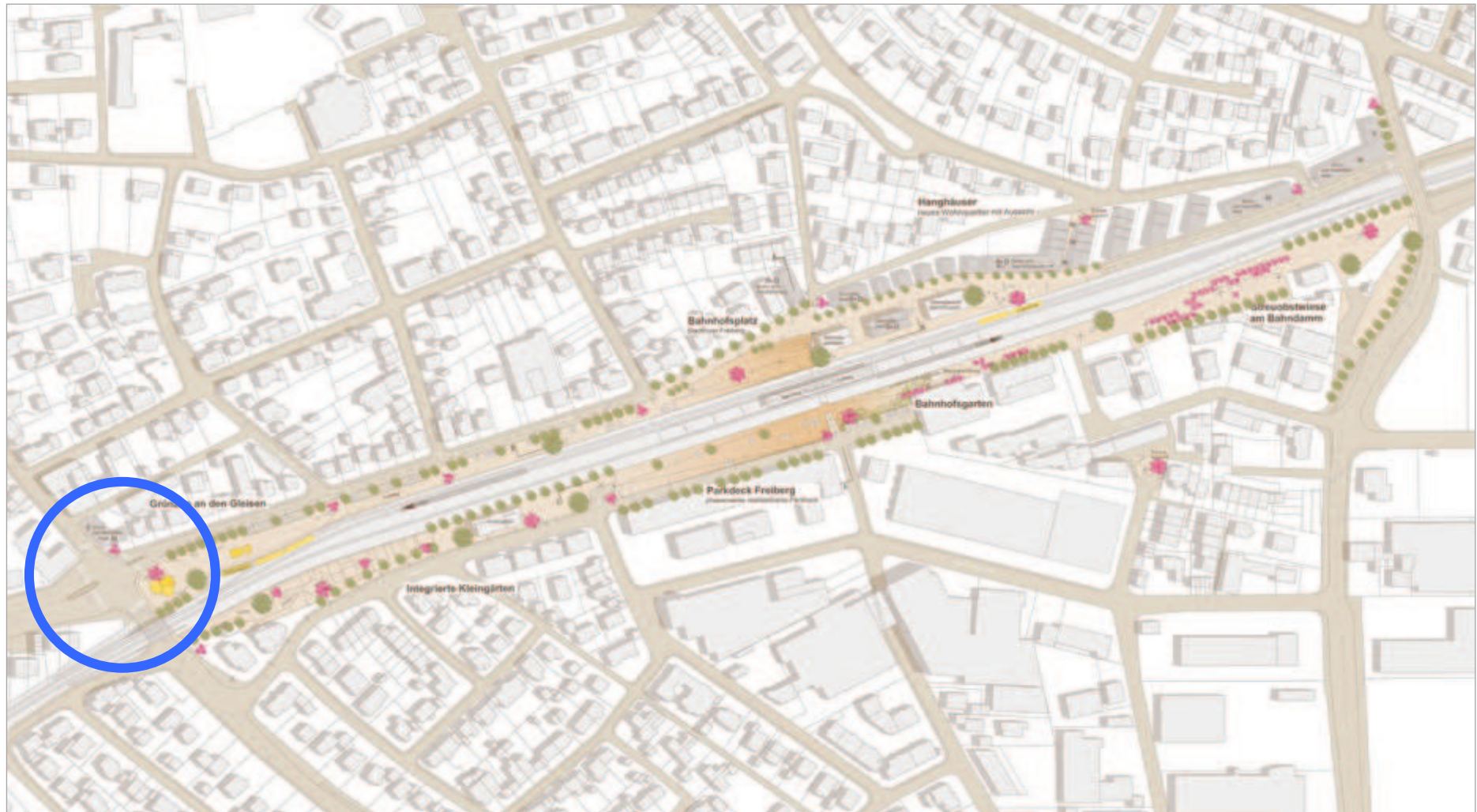


Ansicht Nothaftstraße, Richtung Süd



Verkehr





Kreisverkehr Stuttgarter Strasse x Bahnhofstrasse?